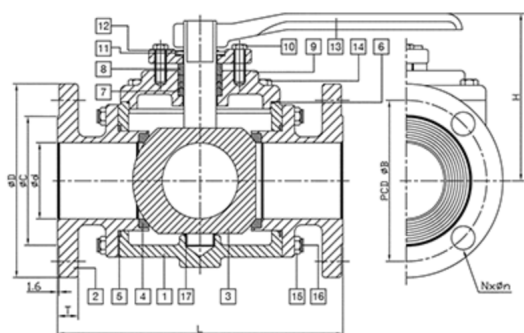
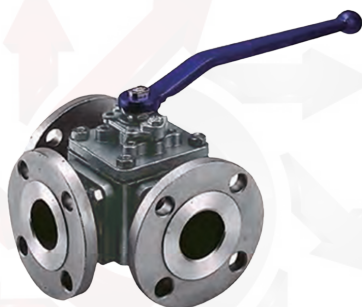


# 3 WAY 316 STAINLESS STEEL VALVE #3L66F-150 & #3T66F-150



COLE  
INDUSTRIAL  
PVF | SANITARY STRUCTURAL  
STREAMLINED

Item	Parts	Material
1	Body	ASTM A351-CF8M ASTM A261-WCB
2	Flanged for Valve	ASTM A351-CF8M ASTM A261-WCB
3	Ball & Stem	ASTM A351-CF8M ASTM A351-CF8
4	Ball Seat	RTFE
5	Joint Gasket	PTFE
6	Gasket	PTFE
7	Stem Packing	PTFE
8	Gland	ASTM A351-CF8 ASTM A261-WCB
9	Cover	ASTM A351-CF8M ASTM A261-WCB
10	Bolt	SS 304 S45C
11	Stopper	SS 304
12	C Retainer Ring	S45C
13	Handle	FCD
14	Bolt	SS 304 S45C
15	Nut	SS 304 S45C
16	Stud	SS 304 S45C
17	Sleeve	PTFE

SIZE	d	A	B	C	D	G	H	L	T	N	n	U	P	Torque	WT
1-½"	1.57	1.97	3.88	2.87	5.00	0.87	4.53	8.70	0.56	4	0.63	0.37	0.67	346	29
2"	1.97	2.76	4.74	3.62	5.98	0.87	4.80	10.00	0.63	4	0.75	0.37	0.67	737	30
2-½"	2.60	2.76	5.49	4.13	7.01	1.16	6.42	11.10	0.69	4	0.75	0.44	0.67	806	55
3"	2.99	4.02	6.00	5.00	7.48	1.16	6.89	10.49	0.75	4	0.75	0.44	0.67	1657	71
4"	3.98	4.92	7.50	6.18	9.02	1.34	8.46	13.11	0.94	8	0.75	0.50	0.91	2072	118
6"	5.94	4.92	9.51	8.50	10.98	1.77	10.08	16.77	1.00	8	0.87	0.50	1.38	3912	165
8"	7.91	6.50	11.75	10.63	13.50	2.36	11.93	20.87	1.13	8	0.87	0.62	1.77	8000	212

\*Actual torque values may vary. Please consult the factory.

\*\*All torque values are in in-lb. Weight values are in lb.

