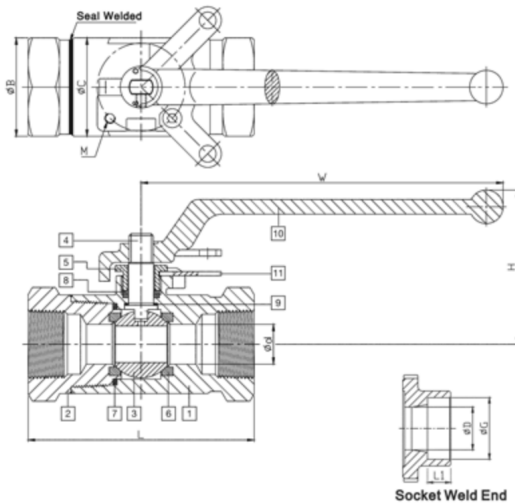


2 PIECE HIGH PRESSURE 316 STAINLESS STEEL BALL VALVE #6266HP



COLE
INDUSTRIAL
 PVF | SANITARY | STRUCTURAL
 ————STREAMLINED———



Item	Description	Material
1	Body	ASTM A351-CF8M
2	Cap	ASTM A351-CF8M
3	Ball	ASTM A351-CF8M
4	Stem	ASTM A276-316
5	Gland Nut	AISI 304
6	Seat	PEEK
7	Seal	GRAPHITE
8	Packing	GRAPHITE
9	Thrust Washer	CTFE
10	Handle	AISI 304
11	Locking Pad	AISI 304

SIZE	L	L1	D	G	H	W	d	B	C	ISO 5211	M	Torque	WT
1/4" F	3.00	0.39	0.31	0.55	2.23	5.59	0.25	1.26	1.54	F03	M5*P0.8	80	1.50
3/8" F	3.00	0.39	0.39	0.71	2.23	5.59	0.25	1.26	1.54	F03	M5*P0.8	80	1.50
1/2" F	4.00	0.39	0.59	0.87	2.23	5.59	0.50	1.50	1.54	F03	M5*P0.8	80	2.00
3/4" F	4.25	0.51	0.79	1.08	3.00	6.81	0.75	1.85	2.05	F04	M5*P0.8	240	3.40
1" S	4.25	0.51	0.94	1.36	3.00	6.81	0.75	2.17	2.17	F04	M5*P0.8	240	5.90
1" F	4.80	0.51	0.94	1.36	3.27	6.81	1.00	2.17	2.68	F05	M6*P1.0	295	4.00
1-1/2" F	5.28	0.51	1.50	1.93	4.61	9.74	1.50	3.03	3.82	F07	M8*P1.25	455	13.40
2" S	6.22	0.63	1.97	2.41	4.61	9.74	1.50	3.62	3.82	F07	M8*P1.25	455	16.30

*Actual torque values may vary. Please consult the factory.

**All torque values are in in-lb. Weight values are in lb.

